

The Anchor

February 2008
Volume 3 Issue 1



Center for Coastal & Ocean Mapping / Joint Hydrographic Center
ccom.unh.edu

24 Colovos Road, Durham, NH 03824

Arctic 2007 Data Released

By Briana Sullivan

INSIDE THIS ISSUE

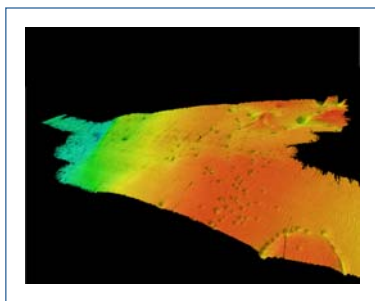
- 1 Arctic 2007 Data Released
- 2 Mapping Mariana Ridge
- 3 Tidbits
- 4 Outreach
- 5 Student News
- 6 Administrative Notes

The much anticipated release of the data from the HE0703 Cruise to the Arctic took place on Monday, February 11, 2008. The cruise resulted in new data from the northern Chukchi cap. "We found evidence that the foot of the slope was much farther out than we thought," said Larry Mayer, expedition chief scientist and co-director of the Joint Hydrographic Center at UNH. "That was the big discovery."

The CCOM/JHC Law of the Sea Program website

(http://ccom.unh.edu/law_of_the_sea.html) shows the area surveyed as well as interesting features found during data collection.

According to UNH Media Relations reporter Beth Potier, news of the Arctic data release on 2/11/08 "...has turned up in nearly 100 newsclips, so far. Most of them are the AP story, which has run in the online version of the New York Times, Boston Globe, Washington Post, LA Times, and many others".



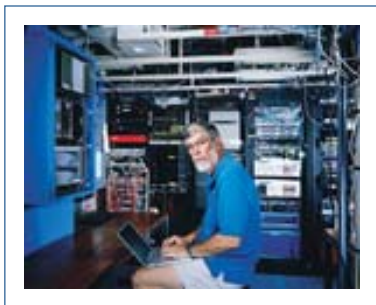
Pockmarks found in the Central section of the cruise area.



The Arctic 2007 (HE0703) Cruise overview.

Completed Mapping the West Mariana Ridge in 2007

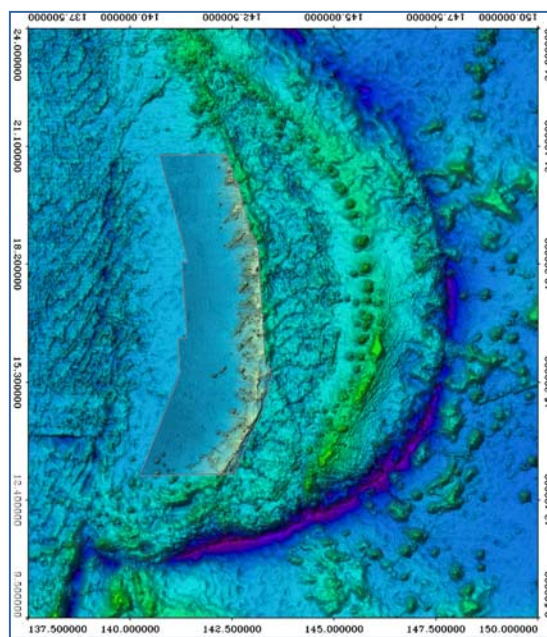
By Jim Gardner



Jim Gardner cruising in the Marianas.
Image source: Wired Magazine
Article: [Foreigners Keep Out! High Tech Mapping Starts to Redefine International Borders](#)

Jim Gardner returned 2 days before Christmas from his 6-week expedition to complete his mapping of the West Mariana Ridge and eastern Parece Vela Basin in the eastern

Philippine Sea (Figure shown). He survived 7 weeks, often plagued by a strong typhoon just to his west and a coffee ration that started the day he went aboard the U.S. Naval Oceanographic Office T-AGS-60 survey ship USNS



West Mariana Ridge and Eastern Parece Vela Basin

Bowditch. The cruise objective was to collect multibeam bathymetry to support the U.S. efforts to extend jurisdiction beyond the Exclusive Economic Zone in this area under the U.N. Convention on the Law of the Sea.

The 2007 cruise complimented his 2006 cruise to the same region. The startling features discovered on the 2006 cruise continued to appear in the 2007 data. These features include

intricate channel systems that have all the characteristics of subaerial drainage systems, beautiful conical submarine volcanoes and fields of huge bedforms apparently formed as

sediment that has been eroded off of the volcanoes has been rapidly deposited on the basin floor. Another surprise was that the summits of two of the flat-topped volcanoes (guyots) are less than 20 m below the sea surface,

giving some concern to the ship's Captain. However, the hazard was less surprising than the fact that these seamounts were supposed to have subsided about 1000 m since they went dormant about 7 million years ago. Apparently, there is still volcanic activity along the West Mariana Ridge.

Unfortunately, the tan Jim got from working in the tropics quickly faded as he spent his first 2 days at home shoveling snow. ❄️❄️❄️

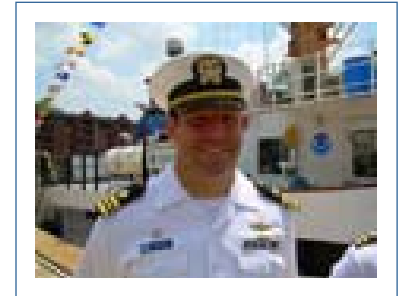
Tidbits

By Briana Sullivan

NOAA ACO Award

The NOAA Association of Commissioned Officers (ACO) recognized LCDR Richard T. Brennan, of NOAA's Office of Coast Survey, for his efforts with the "Tide-Aware Chart of the Future". His work resulted in a "tide-aware" ENC that uses a TCARI

engine to create instantaneous water level surfaces. This information is then broadcast over AIS to provide live, up to date safe contours specific to a ship's needs. ***



LCDR Richard T. Brennan

Shallow Survey Conference Registration Now Open

Attendees can now register through the UNH eVENTS system by going to the conference website www.shallowsurvey2008.org.

The early response has been strong, and fourteen exhibitor booths have already been reserved. The conference will be held on October 21-24 at the Wentworth by the Sea Hotel in Newcastle, NH. ***

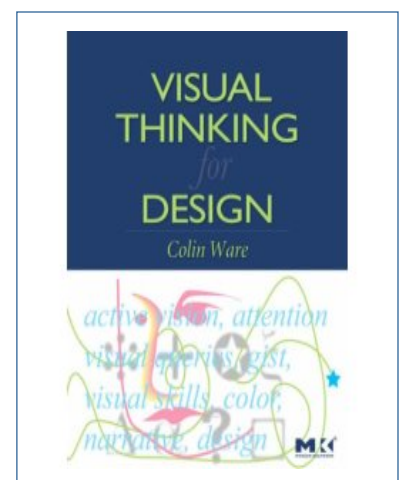


Book Publication

Colin Ware just published his newest book, Visual Thinking for Design. "This book, grounded in the current science of human perception, is key to helping the creators of visual systems do their best work. The book is designed for designers, and has an emphasis on visual thinking as a process. It includes hundreds of illustrative examples and is very task-oriented, with how-to information and visual tasks, which complements the visual thinking process." – from the book description. ***

"This book [Visual Thinking for Design] is scary good."

-Stuart Card, Senior Research Fellow, and manager of the User Interface Research group at the Palo Alto Research Center



Tidbits Continued

Web 2.0 Features

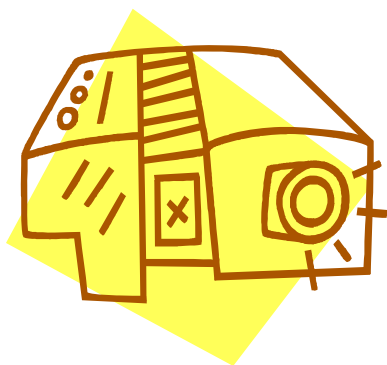


Over the past year the CCOM/JHC website (<http://ccom.unh.edu>) has slowly been moving towards more web 2.0 features and functionality, which means not only is more of the site database driven, but it is easier to access and display the data. The following pages

are now database driven and are using ajax technology to retrieve desired sections of the data from the database: Annual Reports, Articles, CCOM floor plans, GEBCO Alumni, Healy 07-03 Outreach Project, People, Posters, Publications, Seminars, Home page news and seminar items, and the html versions of the Law of the Sea reports. ***

High Bay Projection System

By Andy McLeod



The High Bay has a new projection system that is intended for instructional and presentation use during hands-on events in the High Bay and specifically targeted for projects in the Tow and Engineering tanks. A wireless projection system is installed between the Sanyo projector and the user's computer.

This system will allow for the presentation of real-time data or graphic intensive presentations to large groups of people. This solution allows the user to project a laptop

display from the VGA output onto one of two wall screens of the High Bay. This system does not require software to be loaded on to the user's computer, instead it merely requires the user to plug in the transmitter module and select Fn-F8 until the projector responds. As this is a wireless transmitter option, be aware that the display resolution is limited to 1024x768, but it supports 30 frames per second transmission rate of video.

Stop on by and try it out!***

Outreach

GIS Day 2007

By Briana Sullivan



The GeoWall at GIS Day 2007

GIS Day in November was another huge success! Brian Calder showcased the Scapa Flow Archeology Project and much of the Data Visualization Lab was available to show off GeoZui4D via the GeoWall and a Wii controller. Thanks to all who participated. In the words of the conference coordinator, Michael Routhier, " ..thanks for the help that each of you provided in organizing, setting up and staffing this year's GIS Day. All of the comments that I've received from our guests and

GIS Day cont'd

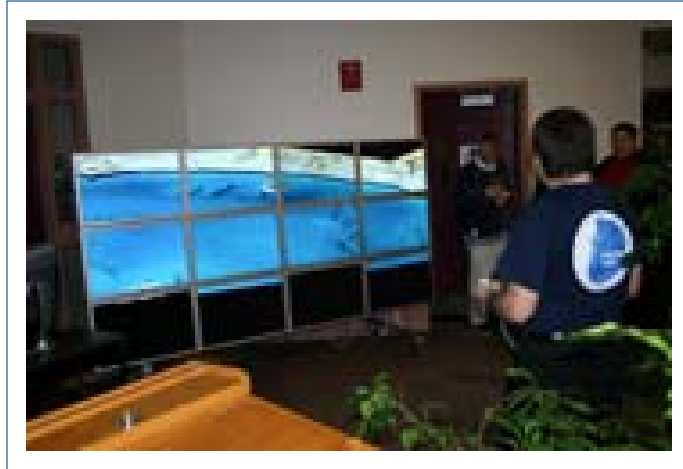
participants were very positive and I'm sure that this is directly attributable to the hard work that all of you put into this year's events. I'm certain that through your efforts we provided a lasting educational and professional experience for all of our guests. Thanks so much for being part of the fun!" ***

Nor'Easter Bowl

By Brian Calder

On Saturday, 9 Feb, fifteen teams from high-schools across New Hampshire, Vermont and Maine competed in the National Ocean Science Bowl's northern New England regional competition, the Nor'Easter Bowl. Held annually, the Nor'Easter Bowl pits teams of four students against each other, answering questions on all aspects of ocean sciences both in team challenge (written) questions and against the clock in buzzer rounds.

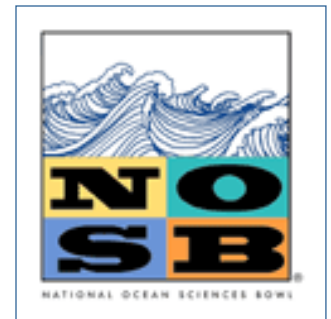
This year, the competition was held in Kingsbury and Spaulding Halls, where CCOM personnel Brian Calder and Roland Arsenault ran the electronic score-keeping system, and Larry Mayer and Jim Gardner participated in the "Science Central" judging teams, which mark the two written questions that the teams answer in each round. Adapting the software first developed for the 2002 and 2005 competitions, the score-keeping system uses high-resolution MBES bathymetry (this year from the Atlantic LOTS mapping work) to display the detailed scores for the morning's round-robin competition as billboards embedded within the scene. Automatic animation of the scene in GeoZui4D showcases some of the Center's abilities, provides a talking point for communicating



Roland Arsenault showing off the wii to control the GeoWall.

about ocean mapping with the (highly motivated) students, and (of course) provides the all-important scores.

The competition itself was dynamic and lively, with the teams answering questions at the Undergraduate level in fields from marine biology to plate tectonics. This year's competition was tightly fought, with a number of teams being eliminated with a one-point loss in the afternoon's events. Last year's national champions, Contocook Valley Regional High School (ConVal) of Peterborough, NH, fielded two teams and again had their 'A' team



Judges from CCOM: Jim Gardner and Larry Mayer

Nor'Easter Bowl cont'd

The scoring setup with GeoZui on the right.

take first place, defeating South Burlington (VT) High School's 'B' team 80-32 in the final. This makes the fifth consecutive regional win for ConVal, and takes them to the national finals in Seward, AK in April.

The Nor'Easter Bowl takes place every year at the start of February, and rotates sites between University of New Hampshire, University of Maine and the University of New England. All of the participating institutions are encouraged to take part by contributing judging teams to each event, so you can participate in any year. The UNH contingent is organised through the Cooperative Extension and Marine Docents program. Contact: Mark Wiley (749-1565, mark.wiley@unh.edu). ***

Student News

Two more NOAA students graduate

By Linda Prescott

Nick Forfinski and **Lynn Morgan**, two of our NOAA graduate students, finished their Masters Programs in December.

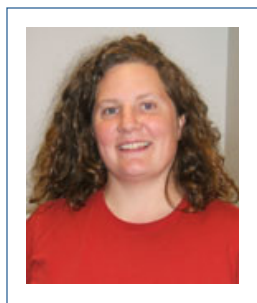
Lynn and her husband, Eric, spent Christmas at home together in Portland, Oregon. Their home previously belonged to Lynn's grandparents, and Lynn and her family enjoyed being back there again for the first time in a number of years.

Lynn and Eric returned to NH after the New Year, before driving their truck back to the west coast.

They took a break from driving and spent two days skiing in the Rockies.

Lynn is now back at her position as Chief Survey Technician aboard the NOAA Ship FAIRWEATHER. The ship is based out of Ketchikan, AK but Lynn returned to the ship in Seattle, where it is undergoing repairs.

Although she's only been back at work for a short time, Lynn is already finding that the knowledge she obtained at CCOM/JHC is proving very useful on board the ship.



Lynn Morgan, recent CCOM graduate

Student News cont'd

Nick Forfinski has also returned back to work since completing his studies at the University of New Hampshire. He is a physical scientist at NOAA's Atlantic Hydrographic branch in Norfolk, VA. As Nick says "That's really just a fancy title for a hydrographer/cartographer mutt."

During Nick's brief time between school and work he went home to Michigan to visit with family. Though he plans to be in Norfolk for a while, he says the West Coast is calling to him. "I get insanely

jealous when I see all those west coast boats surveying in front of glaciers. Also, when I'm done with my NOAA commitment, the Appalachian Trail will be waiting for me."

We wish both Lynn and Nick good luck in their future endeavors.



Nick Forfinski, recent CCOM graduate

"That's really just a fancy title for a hydrographers/cartographer mutt."

Administrative Notes

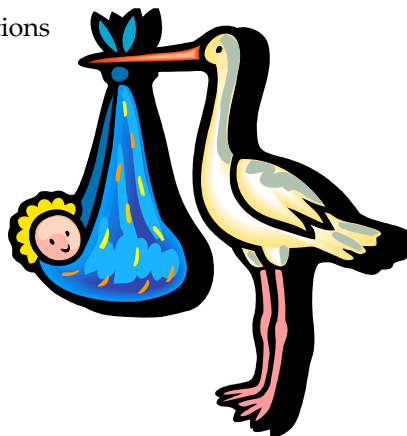
By Linda Prescott

Reimbursement Rate

Effective January 1st, 2008 the reimbursement rate for personal vehicle use is \$0.505 per mile. You can find the most current travel reimbursement form at [http://www.finadmin.unh.edu/pol_procl/apter_07/reimburse_form_protect.xls](http://www.finadmin.unh.edu/pol_procl/chapter_07/reimburse_form_protect.xls)

Baby News

Best wishes to Mashkoor Malik and his wife, Humera, who are expecting their first baby in March. The stork will also be visiting Tom Weber and his wife, Brinda Ramaswamy in May. Congratulations to all! ***



UNH Holidays

Spring break week begins Monday, March 17. ***



Mark your calendars

Monday, February 18th from 1:00 – 2:00 pm. Please join us in the CCOM cafeteria for a potluck luncheon featuring soups, bread, salads and desserts. If you would like to bring something, please see the sign-up sheet on Maureen Claussen's desk.

Center for Coastal & Ocean Mapping/ Joint Hydrographic Center

24 Colovos Road
Durham, NH 03824

Phone:
603-862-3834

Fax:
603-862-0839

E-mail:
info@ccom.unh.edu

